

## Baja California Earthquake 4-4-10 M7.2



Baby delivered in parking lot of seven story Municipal Hospital in Mexicali.



Crack in Mexicali Hospital floor.



Patient evacuated from 6<sup>th</sup> floor of Tijuana General Hospital.



Patient evacuated from 6<sup>th</sup> floor of Tijuana General Hospital in parking lot.



Patient evacuated from 6<sup>th</sup> floor of Tijuana General Hospital in parking lot.



Parking Garage collapse 4 stories under construction at Mexicali Civic Center.



Collapsed roof in Mexicali. Unreinforced masonry rubble.



Home partially collapsed in Mexicali. Wood frame at upper floor, plaster finish, masonry piers at first floor.



Collapsed house in Mexicali.



Damage and partial collapse of exterior façade of Mexicali building.



Escomex Business School damage to façade and window breakage in Mexicali.



Toppled gas station sign crushing car in Mexicali parking lot.



URM store partial collapse in Mexicali.



URM store partial collapse in Mexicali.



URM rubble on street in Mexicali.



Fallen brick veneer on Calexico sidewalk.



Broken storefront window glass on sidewalk in Calexico with Border Patrol guard in background.



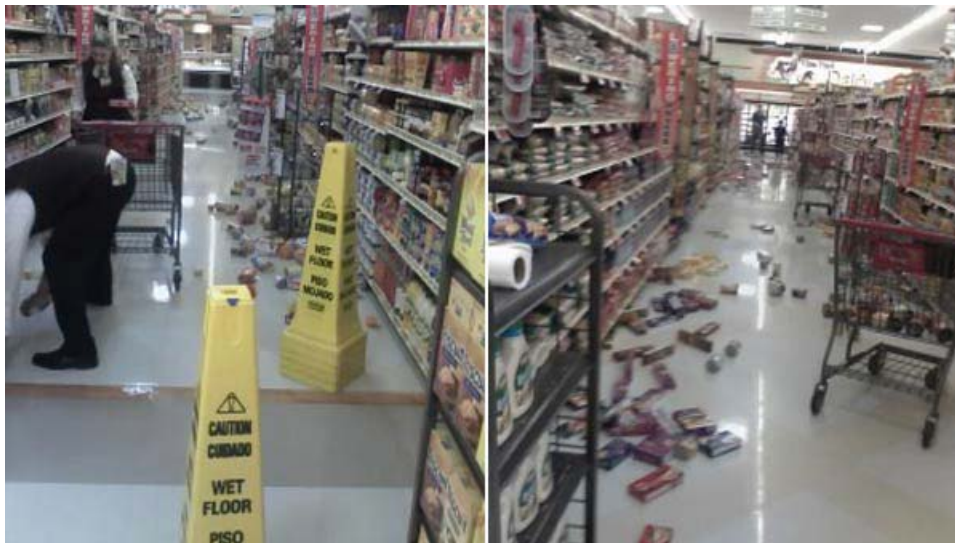
Broken storefront window glass on sidewalk in Calexico.



Broken storefront window glass on sidewalk in Calexico.



Mexicali storefront window fracture.



San Jacinto Stater Brothers store contents on floor.



Shoe store contents in Calexico.



Shoe store in Calexico exterior view.



Grocery store contents on floor in Calexico.



Damage to warehouse store contents in Mexicali.



Downed power pole and lines across street in Mexicali.



Downed power pole and lines across street in Mexicali.



Settlement at bridge approach in Mexicali.



Pavement fracture and settlement in Mexicali.



Sheraton San Diego Harbor Island evacuated due to cracks observed in floor, later determined to be safe to enter.



Fallen cabinetry and contents in El Centro.



Customs building URM at Calexico damaged.



U.S. Customs buildings closed temporarily due to damage at Calexico border crossing. Cars stopped from crossing, but pedestrians northbound still allowed to cross border.



Severely damaged home in Colonia la Puerta.



Heavily damaged home south of Mexicali.



Severely damaged URM in Mexicali.



Calexico URM on 2<sup>nd</sup> Street with vertical cracks.



Home partially collapsed in Calexico.



Bridge approach settlement in Mexico.



Veneer on Sidewalk in Mexicali. Man walking over debris with child.



Mud from underground water leak in Mexicali.



Evacuation of Disneyland.