

Reconnaissance Briefing

on the August 24, 2014

South Napa Earthquake

September 15, 2014

hosted by:



PEER

Earthquake Engineering Research Institute
Pacific Earthquake Engineering Research Center

Agenda

September 15, 2014, 12:00 pm – 1:45 pm

Welcome

Jay Berger, EERI and Stephen Mahin, PEER

Reconnaissance and Clearinghouse Overview

Marko Schotanus, Rutherford+Chekene, EERI & SEAOC

Seismology and GeoScience

Timothy Dawson, California Geological Survey

Geotechnical Engineering

Jonathan Bray, UC Berkeley, GEER & PEER

Structures

Andre Barbosa, Oregon State University, PEER & EERI

Business Interruption and Resilience

Ibrahim Almufti, Arup & EERI

Lifelines

Charles Scawthorn, PEER, SPA Risk, EERI & TCLEE

Bridges

Abolhassan Astaneh-Asl, UC Berkeley

Q&A

Questions from
remote audience?
Email:
heidi@eeri.org

Reconnaissance and Clearinghouse Overview

Marko Schotanus, SE, PhD, LEED AP
Rutherford + Chekene
EERI & SEAOC

DEFINITION:

Clearinghouse = physical (or virtual) location where timely information and data is shared by engineers and scientists who are conducting (field or remote) reconnaissance after an earthquake.

<http://www.californiaeqclearinghouse.org/>

PURPOSE:

- Clearinghouses allow all agencies in the field to coordinate efforts, administer access to restricted areas, share findings, and make plans for teams in the field each day.
- Clearinghouses link the scientific and engineering community with agencies and organizations responsible for emergency response and recovery.



South Napa Activation

- Activated during 7:00am call on Sunday Aug 24, 2014 (within 4 hours of eqk)
- Physical Clearinghouse location created near central Napa with support of Caltrans facility & their satellite communications truck (Sun afternoon)
- Virtual Clearinghouse site launched by EERI
<http://www.eqclearinghouse.org/2014-08-24-south-napa/>
- Active from Sunday Aug 24--Tues Aug 26
- Nightly briefings while active

Acknowledgement to Organization

- Anne Rosinski, CGS
- Luke Blair, USGS
- Caltrans
- Jay Berger, EERI
- Marjorie Green, EERI
- Heidi Tremayne, EERI
- Maggie Ortiz, EERI
- My Davidson, EERI
- Alex Julius, EERI
- Eddie Vega, EERI
- Erik McAdams, EERI

Participants & Teams

CLEARINGHOUSE OPERATIONS

- Anne Rosinski, CGS
- Jay Berger, EERI
- Marjorie Greene, EERI
- Heidi Tremayne, EERI
- Maggie Ortiz, EERI
- My Davidson, EERI
- Alex Julius, EERI
- Eddie Vega, EERI
- Erik McAdams, EERI
- Luke Blair, USGS

GEOSCIENCES

- Donald Wells, AMEC
- Cindy Pridmore, CGS
- Gorson Selz, CGS
- Jennifer Thornburg, CGS
- Jeremy Lancaster, CGS
- Ron Rubin, CGS
- Tim Dawson, CGS
- Tim McCrink, CGS
- Heidi Stenner, EERI
- Betsy Mathieson, EERI/Exponent
- Bill McCormick, Kleinfelder
- John Wesling, OMR/DOC
- Keith Kelson, USACE
- Alexandra Pickering, USGS
- Ben Brooks, USGS
- David Schwartz, USGS
- Dom Pont, USGS
- Jack Boatwright, USGS
- Jim Lienkaemper, USGS
- Ken Hudnut, USGS
- Mike Bennett, USGS
- Nikita Avdievitch, USGS
- Steve DeLang, USGS
- Tom Holzer, USGS
- Cooper Brossy, Fugro
- David Trench, Fugro
- Mike Buga, Fugro

GEOTECHNICAL

- Jon Bray, GEER
- Julien Cohen-Waeber, GEER
- Roberto Lague, GEER
- Zee Beyzaei, GEER
- Michelle Shriro, GEER/GEI Consultants
- Zia Zafir, Kleinfelder
- Mike Jewett, Miller Pacific Co
- Ben Mason, OSU

GOVERNMENT

- Dana Brechwald, EERI/ABAG
- Danielle Meiler, EERI/ABAG
- Michael Germeraan, EERI/ABAG
- Michael Hornick, FEMA
- Wendy Phillips, FEMA

INSURANCE

- Sheri Aguirre, CEA

LIFELINES

- Karl Miersemann, Ebaa Iron
- Jon Freedman, PG&E
- Charles Scawthorn, UC Berkeley/SPA

NONSTRUCTURAL

- Glen Granholm, EERI

RISK ANALYSIS

- Pooya Sarabandi, RMS

STRUCTURES

- Janiele Maffei, CEA/EERI
- Fred Turner, CSSC
- Robert Anderson, CSSC
- Shane Gross, Degenkolb
- Bill Tremayne, EERI
- Jay Lin, EERI
- Abe Lynn, EERI/Cal Poly
- Alessio Vallero, EERI/PEER
- Chiara Mariagiuya Tribulato, EERI/PEER
- Marzia Malavisi, EERI/PEER
- Marko Schotanus, EERI/SEAOC
- Adam Azofeifa, Holmes Culley
- Jonas Houston, Holmes Culley
- Karl Telleen, Maffei Structural Engineering
- Veronica Crothers, Maffei Structural Engineering
- Andre Barbosa, OSU
- Mark R. Pierepiekarz, SEAOC EERI WA
- Jeff Kovach, SEAOC PDPOC EPEP
- Adiruddha Joshi, SFSU
- Ramin Barghi, SFSU
- Dave McCormick, SGH
- Gary Mochizuki, Simpson Strong-Tie
- Louay Shamroukh, Simpson Strong-Tie
- Mike Wright, Simpson Strong-Tie
- Steve Pryor, Simpson Strong-Tie
- Tim Stauffer, Simpson Strong-Tie
- Erica Fischer, SLC

- Connor Genta, Stanford/EERI
- Jonathan Lund, Stanford/EERI
- Brian Olson, Tipping Mar
- Badri Prasad, TTG
- Bruce Kutter, UC Davis
- Cynthia Perry, BFP Engineers

STRUCTURES & BUSINESS CONTINUITY

- Andy Thompson, Arup
- Candice Avanes, Arup
- Ibbi Almufti, Arup
- Lauren Biscomb, Arup
- Mike Mieler, EERI
- Petros Keshishian, EERI/RMS
- Andy Yiu, Partner ESI/EERI
- Joshua Marrow, Partner ESI/EERI

TRANSPORTATION

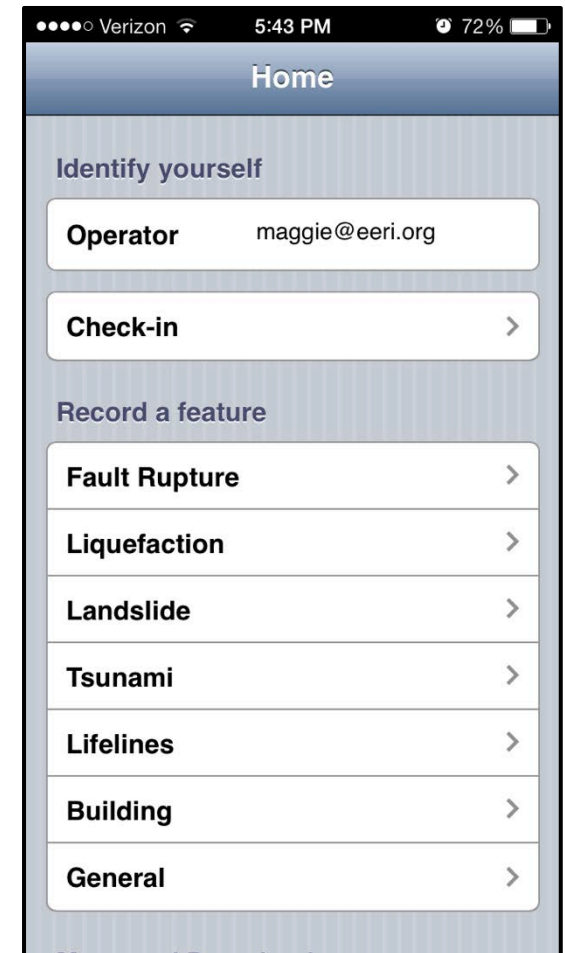
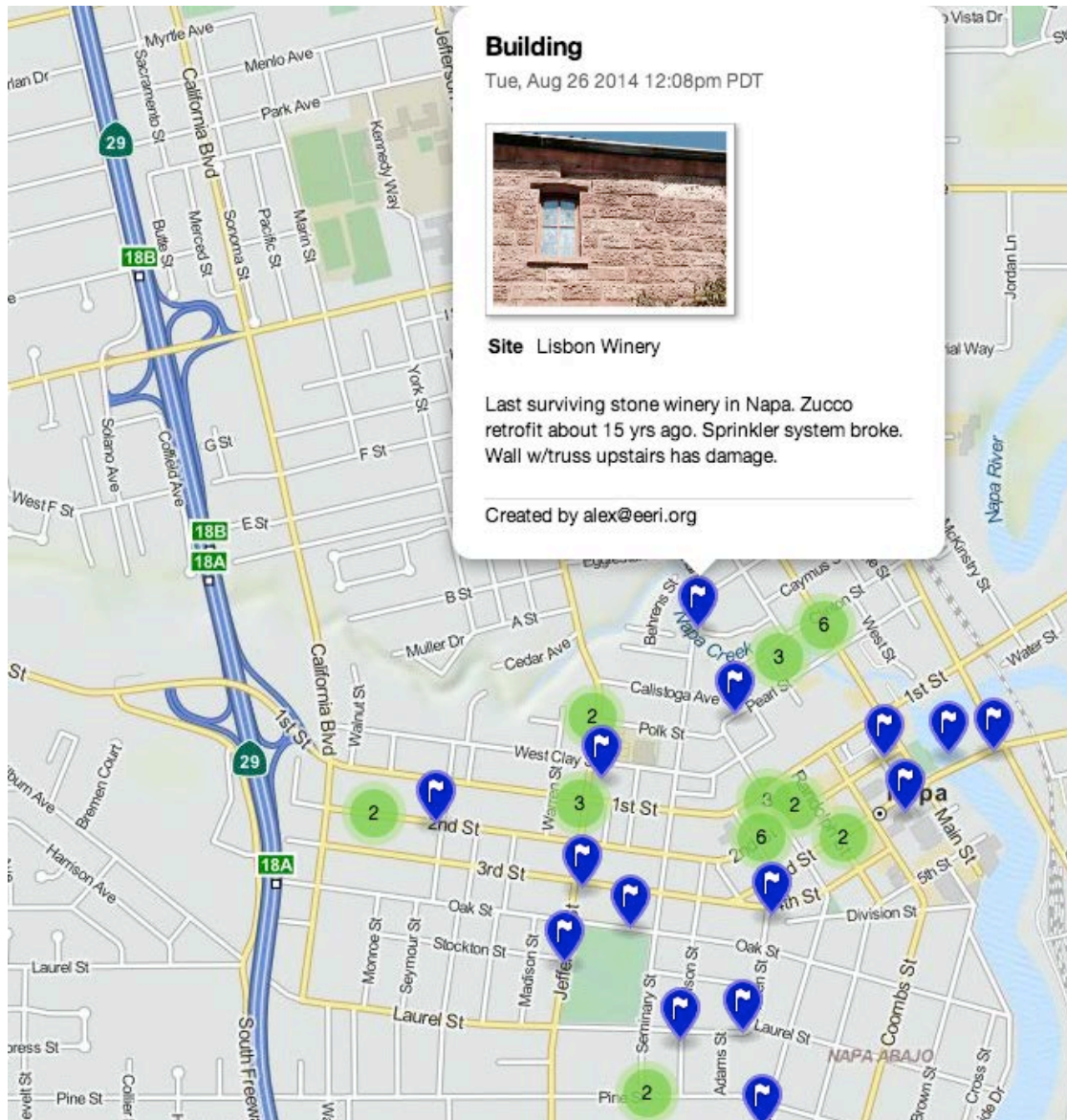
- Carlos Gutierrez, Caltrans
- Gerald Kracher, Caltrans
- Herby Lissade, Caltrans
- John Schmidt, Caltrans
- Mark Yashinsky, Caltrans
- Neil Hayes, Caltrans
- Reue Garcia, Caltrans
- Tim Shaw, Caltrans
- Majid Sarraf, TTG

Data Collection Methods

- Clearinghouse Fieldnotes (field-based web app developed by Scott Haefner & Luke Blair of USGS)
- EERI Photo Upload Tool (post-recon desktop upload)
- USGS Synthesis Layers (via Luke Blair)
- Shared KML or KMZ Data Layers from teams and individuals

<http://www.eqclearinghouse.org/2014-08-24-south-napa/how-to-contribute/>

Data Source: Clearinghouse Fieldnotes



Data Source: EERI Photo Upload Map

GEO-LOCATED PHOTO UPLOAD TO INTERACTIVE MAP

This is the best option for adding data when you return from the field on your desktop computer. It allows you to geo-locate your photos and add them to the clearinghouse via the map interface below.
[Map](#) / [Gallery](#)

Mw 6.0 - South Napa Earthquake 2014-08-24

To browse, zoom or scroll on the map and click any of the markers. To add a point, double-click on the map or enter lat/long or a street address to the right. In order to view the map in "Earth" mode, you need to have the Google Earth plugin installed for your browser.

To download a KML file to import in Google Earth, [click here](#).

85 points on this map

Show Categories:

- Structural
- Transportation
- Geotechnical
- Social Impacts
- Nonstructural
- Tsunami
- Strong Motion Sensors

To add a photo to this map, do one of the following:
[Tutorial here](#)

← **Double-click on the map**
(Won't work in "Earth mode")

OR

Enter Lat and Long

Lat: (-)DD.DDDDDD

Long: (-)DD.DDDDDD

Add point

OR

Enter a street address including city and country

Montana Dr
Apparent lateral spreading. No observable lateral or vertical offset.

There are multiple photos for this point, [click here to view](#)

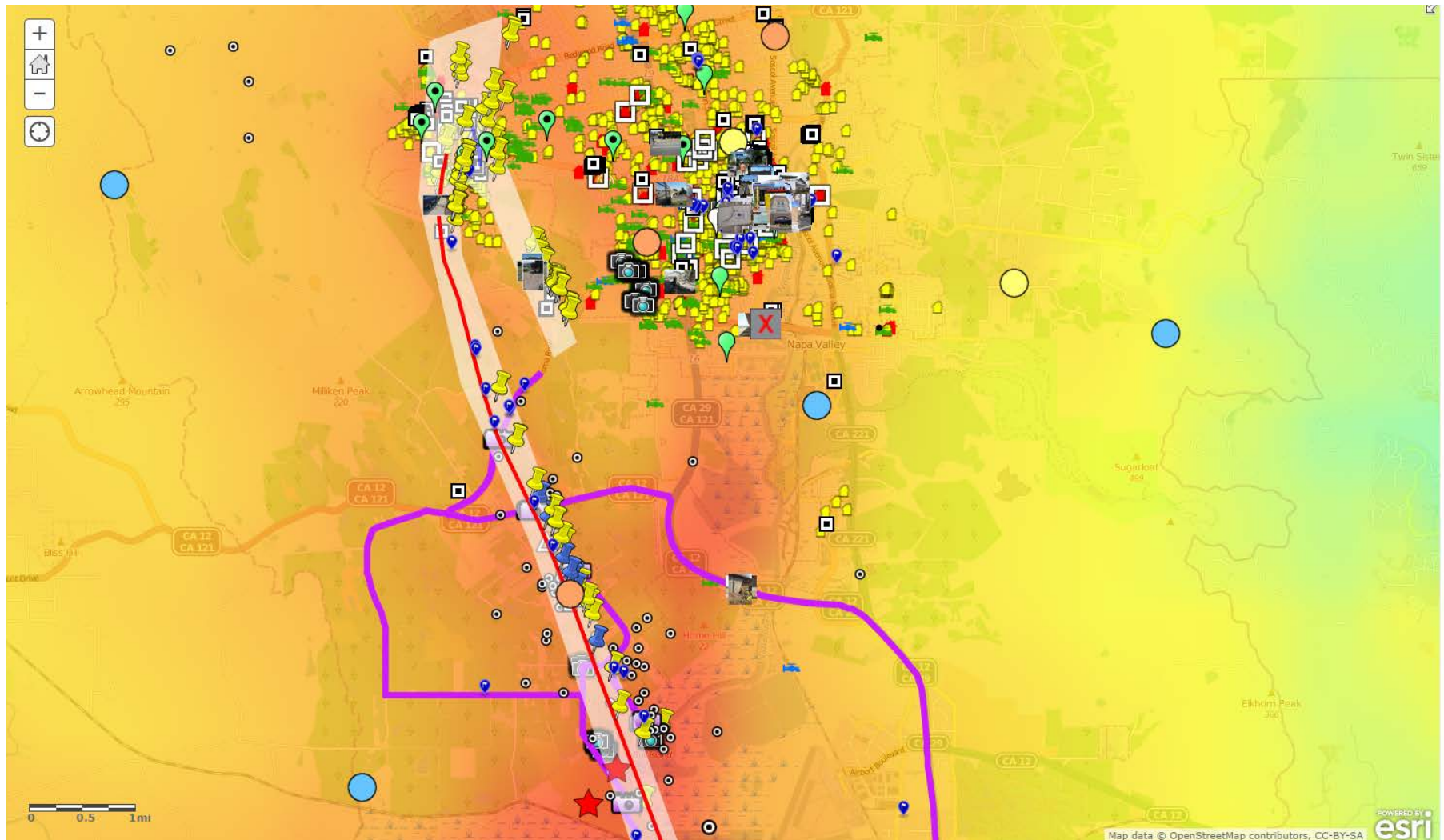
Category: Geotechnical

Photo by: J. Lawson

[Details](#) | [Edit](#) | [Delete](#)

Map data ©2014 Google Terms of Use Report a map error

ArcGIS Online Map Viewer



bit.ly/1smi6so

After the physical clearinghouse...

- Virtual clearinghouse
 - Continue to collect data
 - <http://www.eqclearinghouse.org/2014-08-24-south-napa/how-to-contribute/>
 - Track teams out in the field (through Labor Day)
 - Share reconnaissance needs on website
 - Host web based meetings
- Compile, Synthesize, and Share
 - Continue to collect and compile data
 - Preliminary briefing
 - EERI Special Earthquake Report

Agenda

September 15, 2014, 12:00 pm – 1:45 pm

Welcome

Jay Berger, EERI and Stephen Mahin, PEER

Reconnaissance and Clearinghouse Overview

Marko Schotanus, Rutherford+Chekene, EERI & SEAOC

Seismology and GeoScience

Timothy Dawson, California Geological Survey

Geotechnical Engineering

Jonathan Bray, UC Berkeley, GEER, & PEER

Structures

Andre Barbosa, Oregon State University, PEER, & EERI

Business Interruption and Resilience

Ibrahim Almufti, Arup & EERI

Lifelines

Charles Scawthorn, PEER, SPA Risk, EERI, & TCLEE

Bridges

Abolhassan Astaneh-Asl, UC Berkeley

Q&A